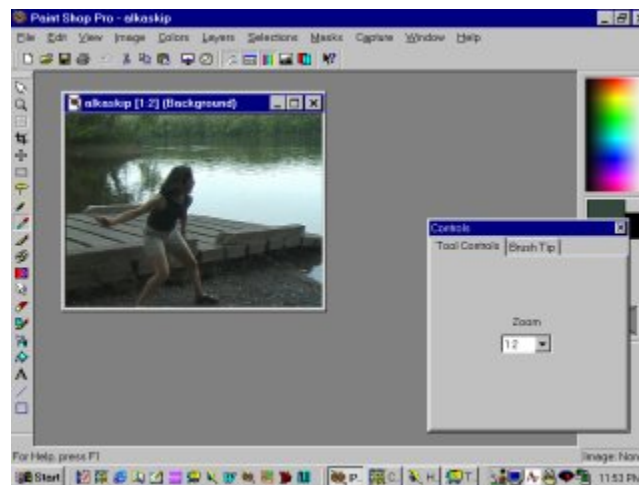




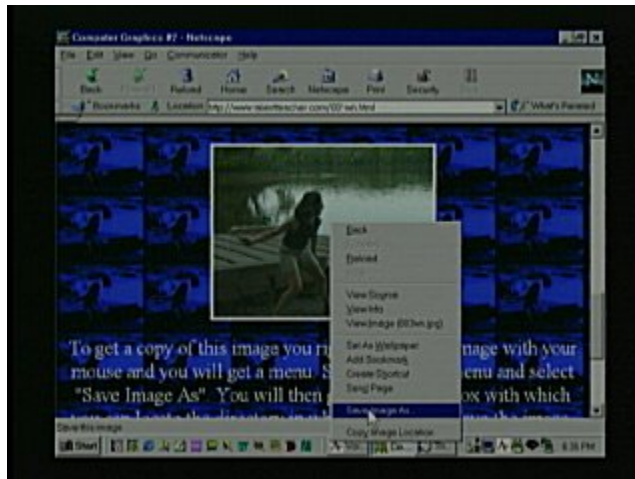
The most popular lesson I teach is editing photographs. Everyone wants to put his or her brother's head on a monkey or something similar. This is also a lesson about "emphasis". You can cause more individuals to notice your artwork or advertisement if you emphasis some element in the work with it's size, the use of humor or visual tricks.



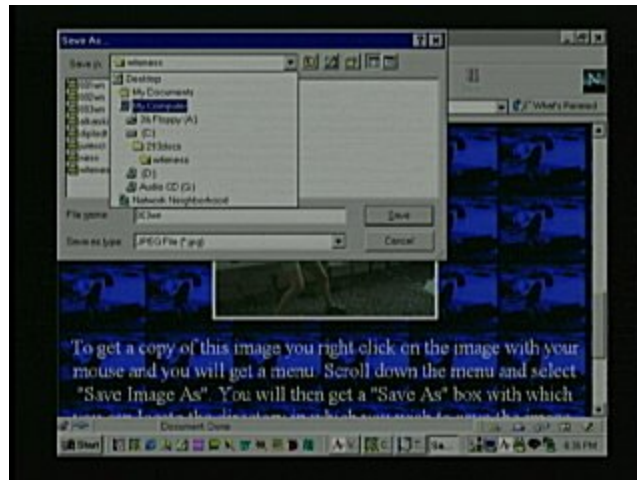
For this lesson you will need your computer, a copy of Paint Shop Pro and a picture containing water. If you do not have an image of water you can use the following image.



To get a copy of this image you right click on the image with your mouse and you will get a menu.



Scroll down the menu and select "Save Image As".



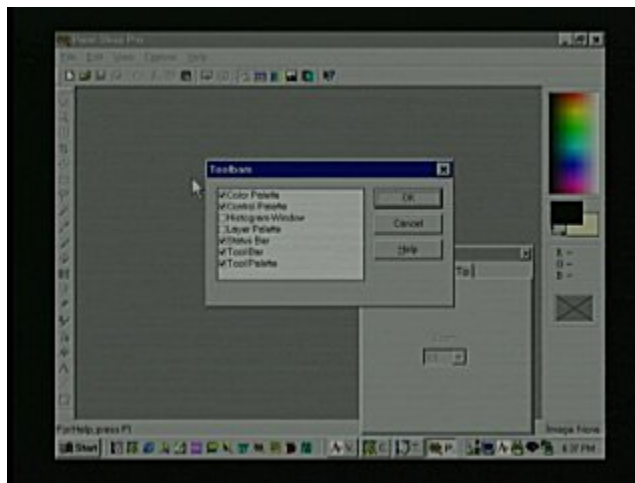
You will then get a "Save As" box with which you can locate the directory in which you wish to save the image. Then click save. The image will be larger than it appears on the web page because you need a large image for this project. I have restricted the way the picture looks on the page so it will fit with the others but when you save it the size will be correct.



Now open Paint Shop Pro or go to Computer Graphics Lesson #1 to learn how to download a free trial copy of it.



Remember from the first Computer Graphics lesson that you will need the Control Palette quite often so I will remind you how to open the Control Palette if you accidentally closed it. Click on the "View" menu and then scroll down to Control Bars and select it.

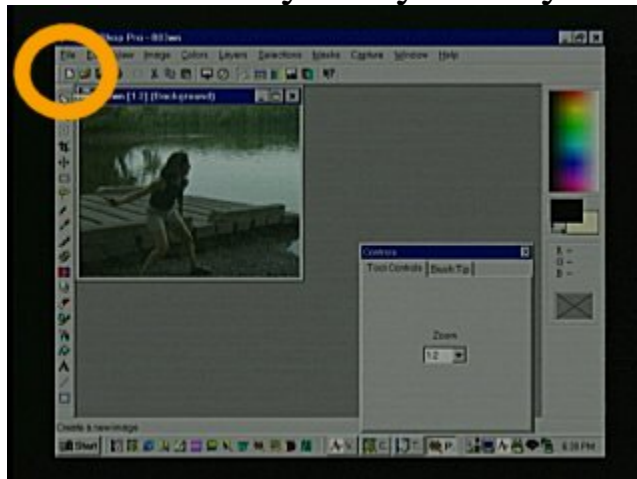


You will get this box where you select Control Palette and then click OK.





The image will open sized to fit in the workspace. This is only the viewing size. You can change the viewing size by pressing the "+" or "-" keys on your keyboard.

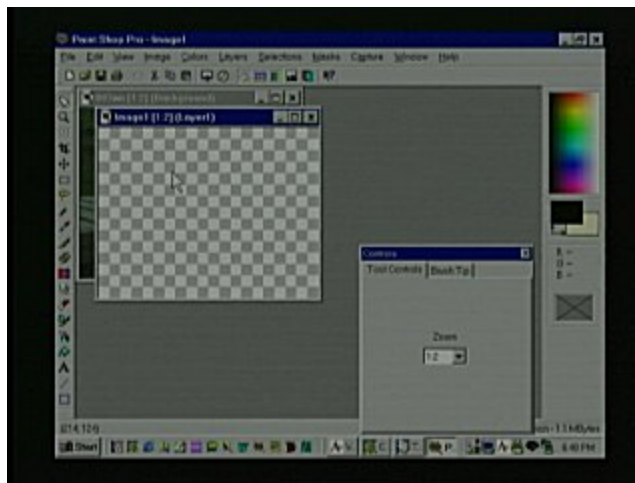


Now click on the little white "New" button in the upper left corner. It looks like a sheet of paper with a bent corner.





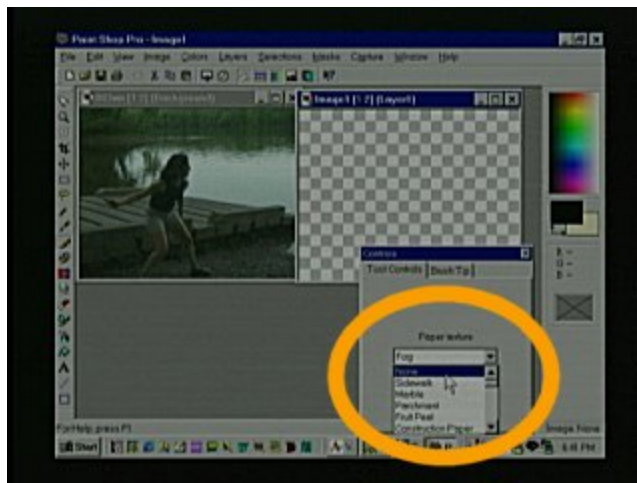
When you get this box make the width 640 and the height to be 480. Change the two selectors on the right to "Pixels" and "Pixels/Inch". Make the Background Color "Transparent", select 16 million colors and click OK.



You will get this box and the checker board pattern indicates that the paper color is transparent.

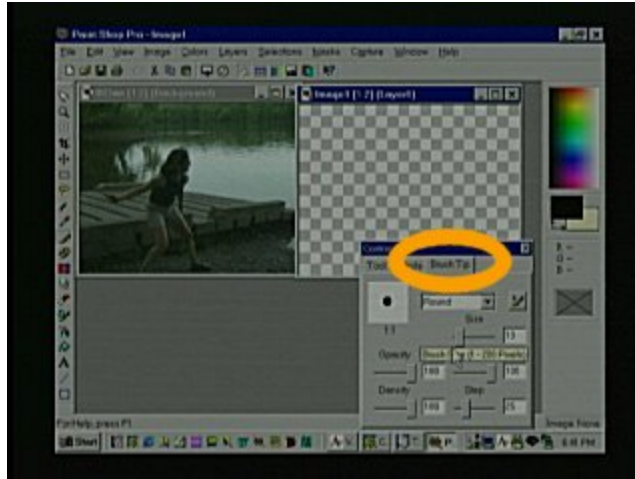


Click on the blue top off the box you just made and drag it to the right side of the workspace and then click on the Paint Brushes icon on the left side of the left.

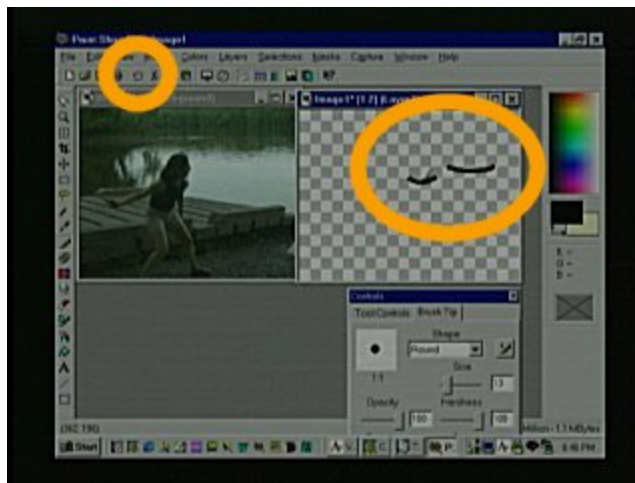


Select Normal on the Paper Texture selector of the Tool Palette.





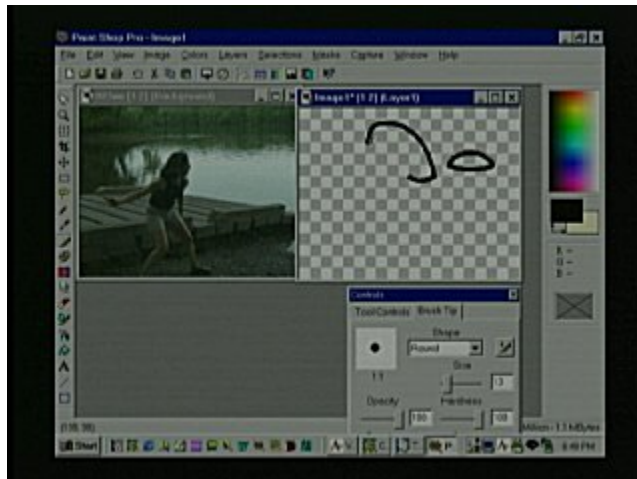
Under Brush Tip make the Size 13 and the Opacity, Density and Hardness to 100. Leave the step at its default and select a round tip.



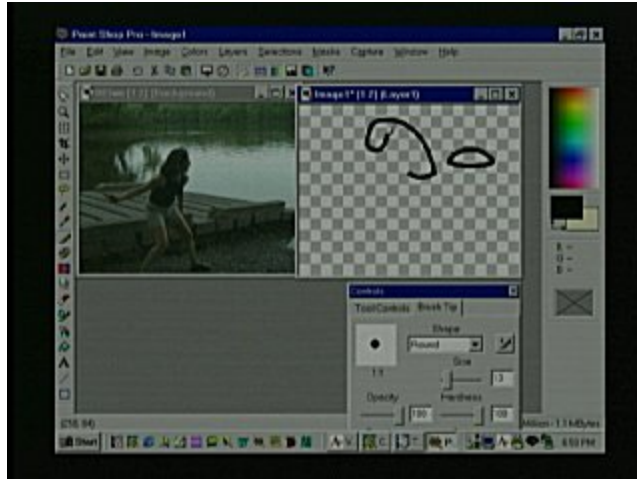
Click on the transparent page and slowly drag two smile lines. One should be shorter and the other longer and a little higher. Remember that at any time you can click on the little curved arrow icon to undo and try again.



Now click overlapping with one of the ends of the larger smile curve and drag a frown curve.



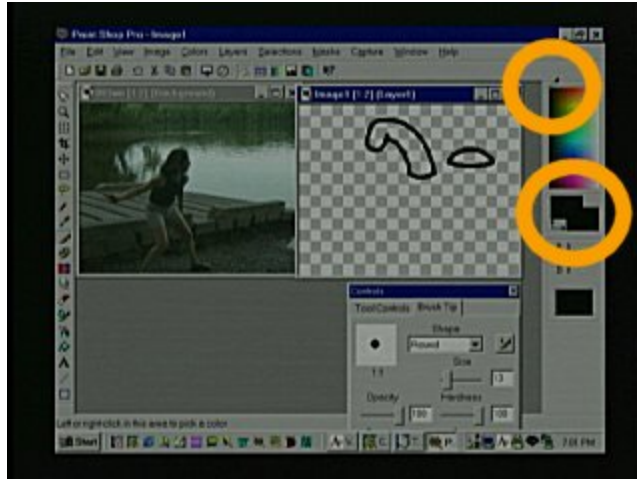
Make a large upside down "J" shape from the right side of the small smile.



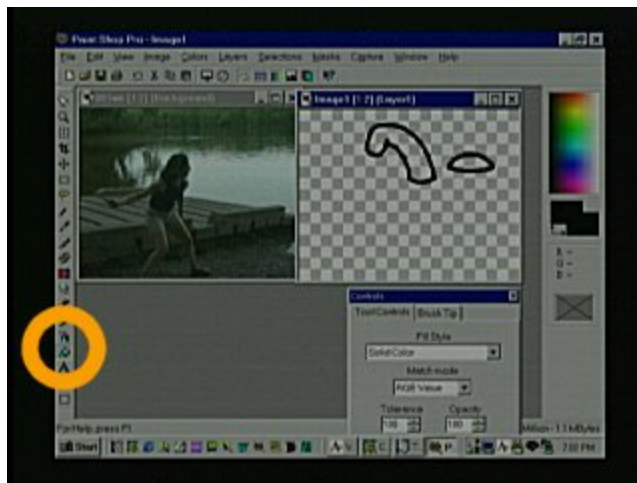
Add a "J" curve to the end of the last curve you made.



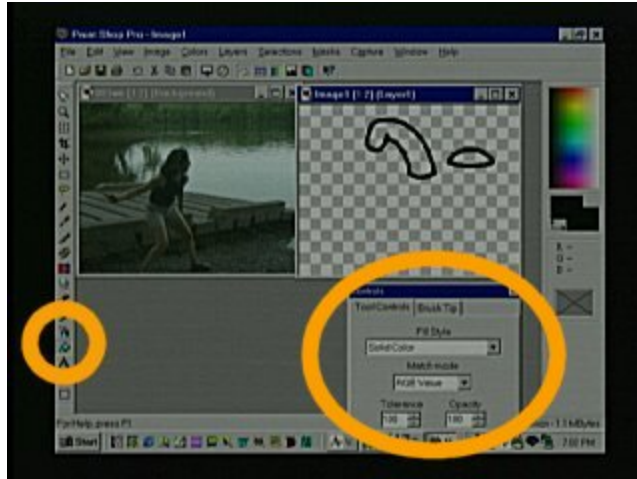
Then draw a line from the left side of the little smile curve to close the shape.



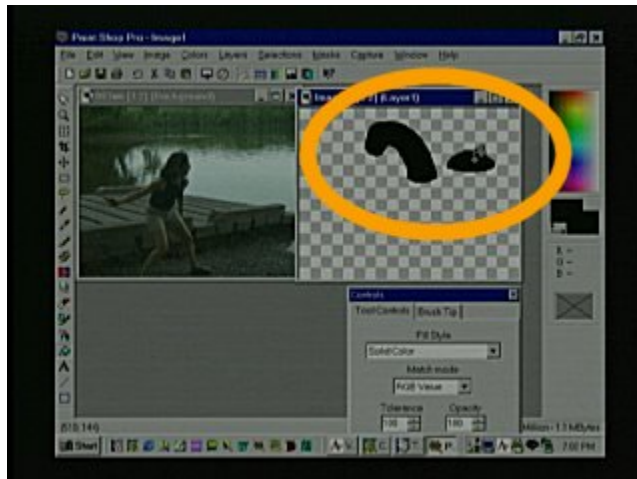
Put your cursor in the upper left corner of the color selection rectangle and right click so that the foreground and background are now black.



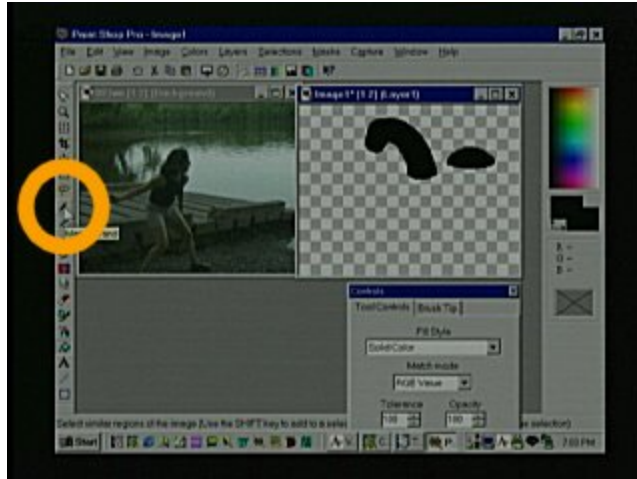
Click the fill tool that looks like a spilling bucket of paint.



In the Control Palette select Solid Color under Fill Style. Select RGB value. Tolerance and Opacity should be set at 100.



Click inside the two shapes to fill them.

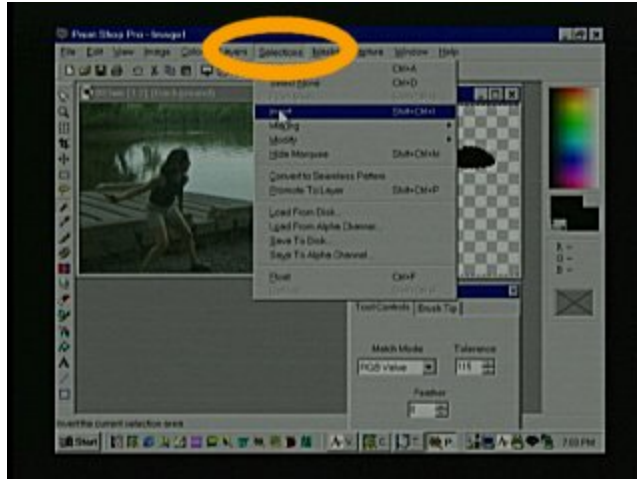


Click on the Magic Wand tool on the left.

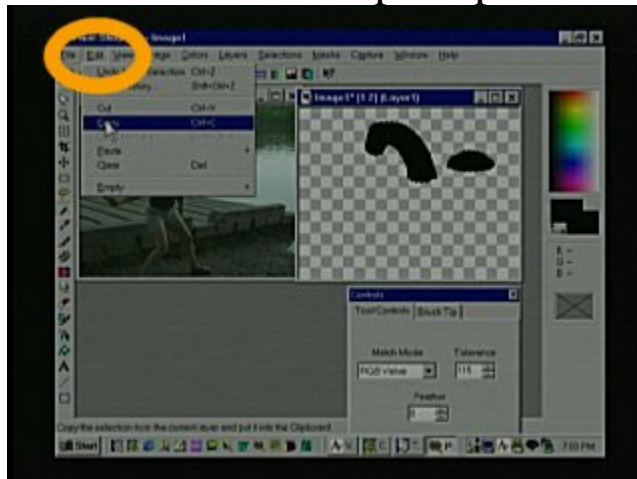


Now click anywhere on the checkerboard and you will notice that the whole space and around the two objects are selected as indicated by a moving dotted line.

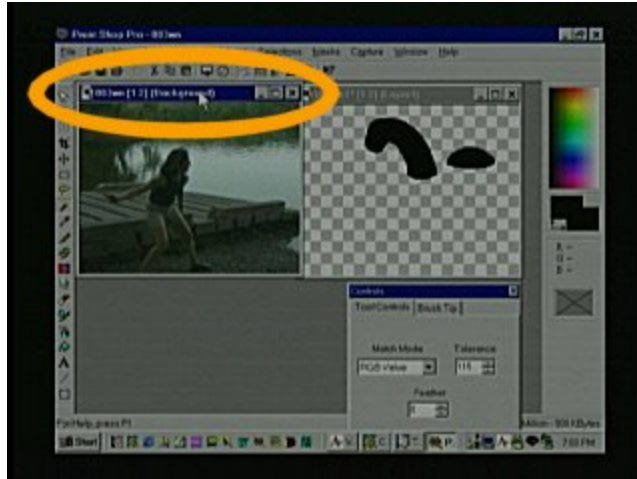




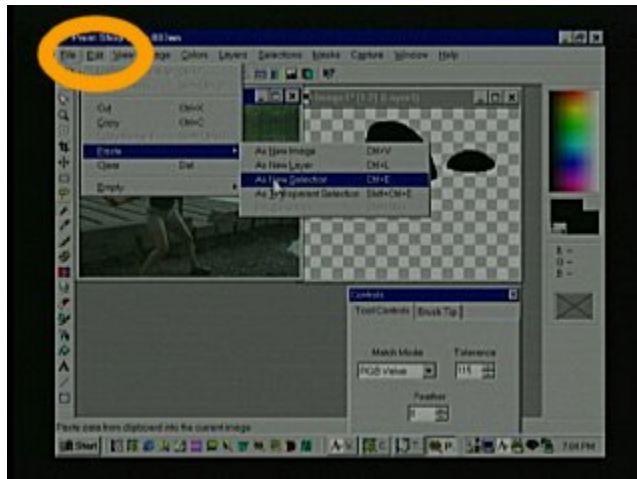
Move your cursor up to the Selections menu and scroll down to Invert. This will cause the sea monster outline to be selected instead of the open space.



Next select the Edit menu and scroll down to Copy. Now you have a copy of the sea monster only.



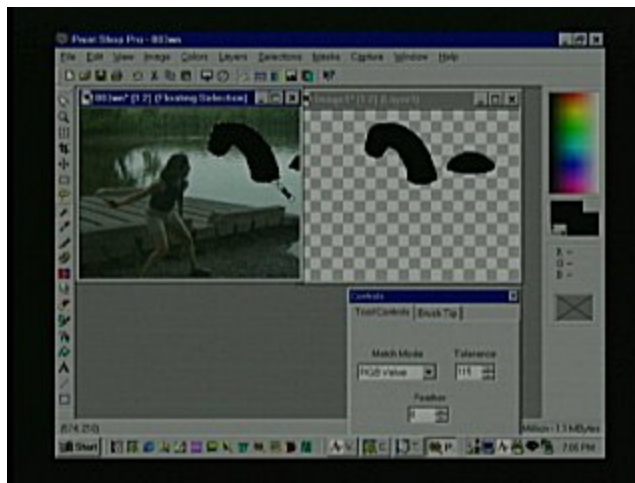
Click on the image with the water so it is the one you are now working on.



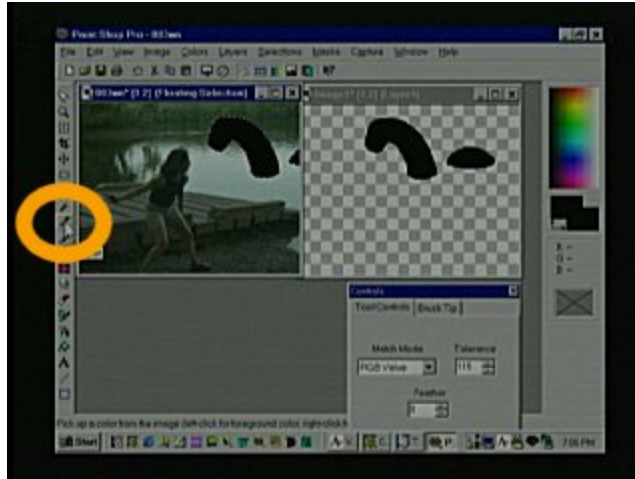
Then select the Edit menu again, scroll down to Paste and then scroll over to As New Selection.



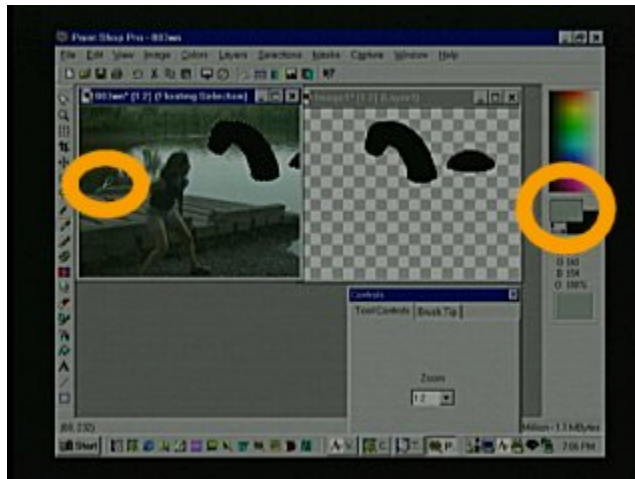
You will find that wherever you move your cursor the pasted selection will follow and you can see where you want to paste it.



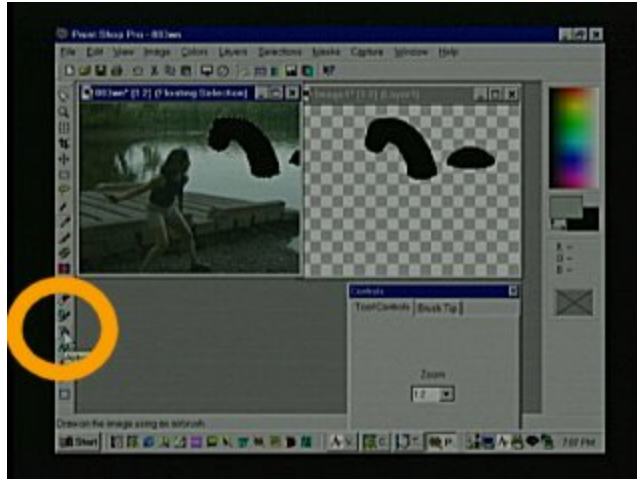
When you click you will see that the selection stays where you clicked but it is still selected and that is the way you want it.



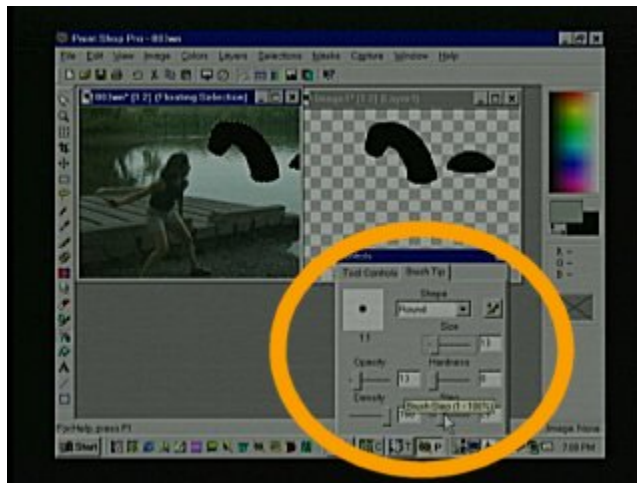
Move your cursor over to the Dropper tool so you can select a color that already exists on the image.



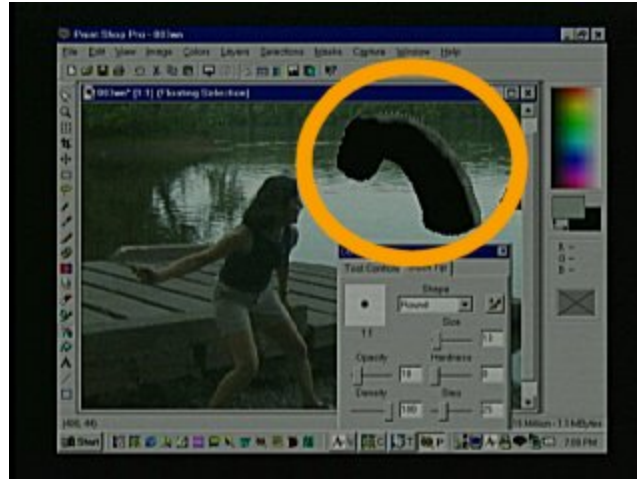
Put the dropper tool on the lightest part of the cement ramp or some other light colored object to click on and select a color from the image. By doing this you will see the foreground rectangle change on the right. When you use colors that already exist in the image you add unity to the work.



Click on the AirBrush tool on the tool bar.



On the Control Palette change the Size to 13, Opacity 10, Hardness 0, Density 100 and Step 25.

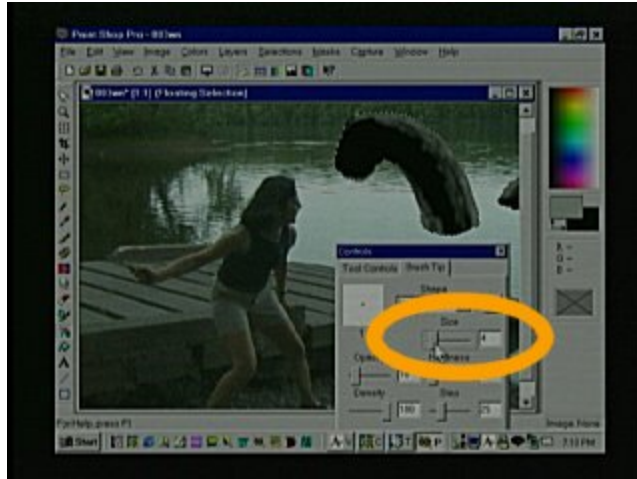


Now press the (+) key on your key board to enlarge the view and click on the right side of the sea monsters neck and stroke up and down painting the highlights that get darker toward the center. You will notice that you can not color out of the lines because we have left the monster selected.

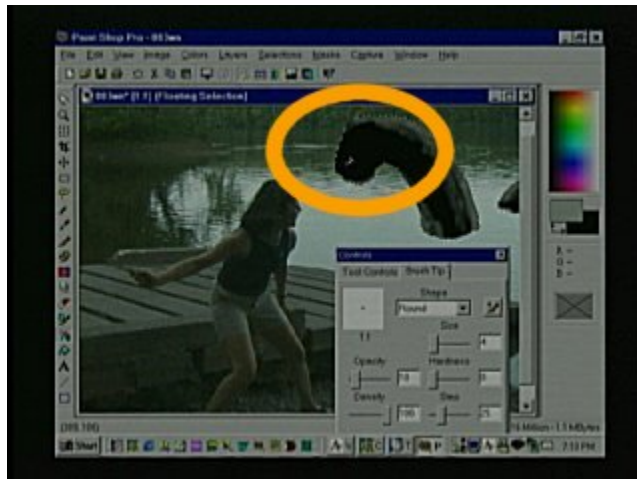


Add some highlights from the reflecting water under the chin and the left side of the neck.

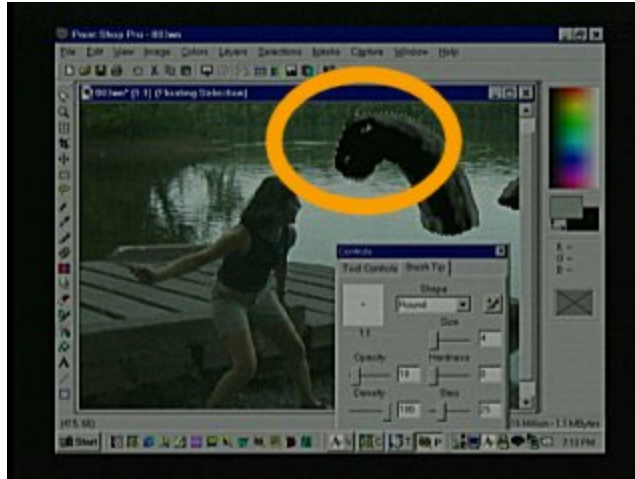




Click on the Size slider of the Control Palette and change the size to 4 to add the facial detail.



Draw a tiny frown curve for the nostril near the left side of the head.



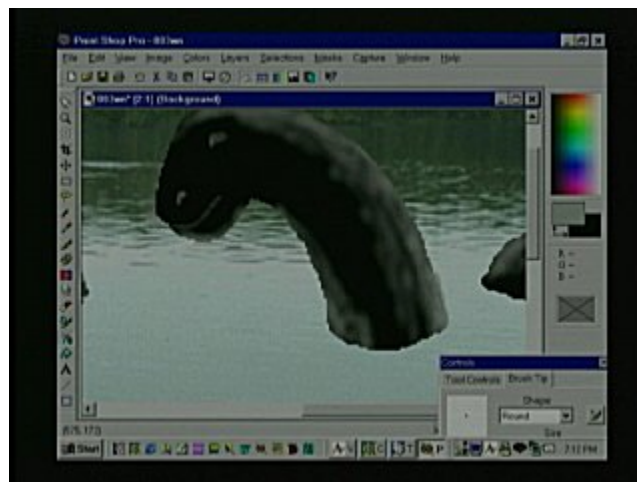
Then make a second slightly larger frown shape higher on the head to indicate the eye.



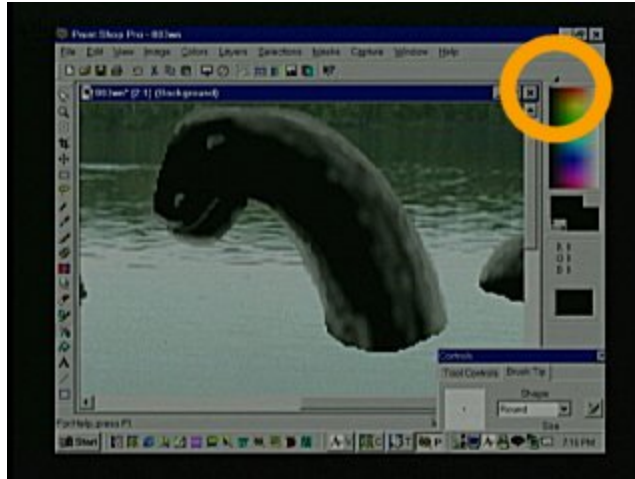
You can also add a long but very pale smile curve for the mouth or leave the mouth out all together.



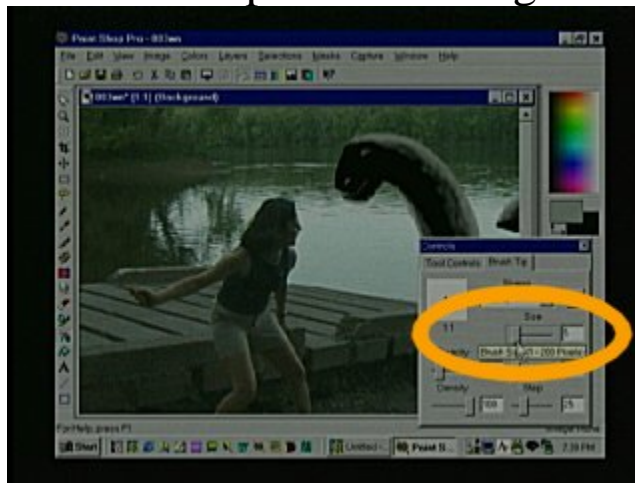
Next click on the Selection menu and choose Select None. This will take away the dotted line around the sea monster.



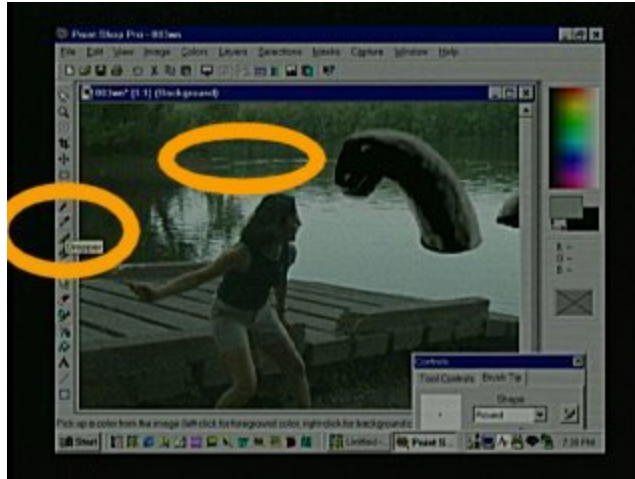
Press the (+) key on your keyboard to enlarge the image even more and scroll till the neck is visible. Now you can more carefully clean up the edges of the beast with the same spray tool you were using.



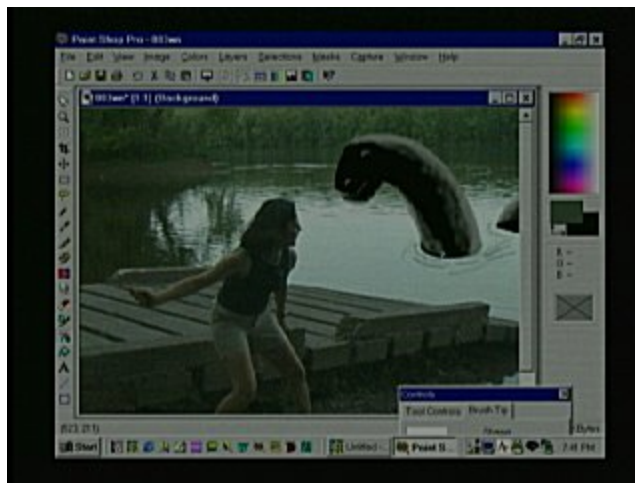
Use the color selection rectangle on the right to left click on black so you can clean up the black edges of the monster.



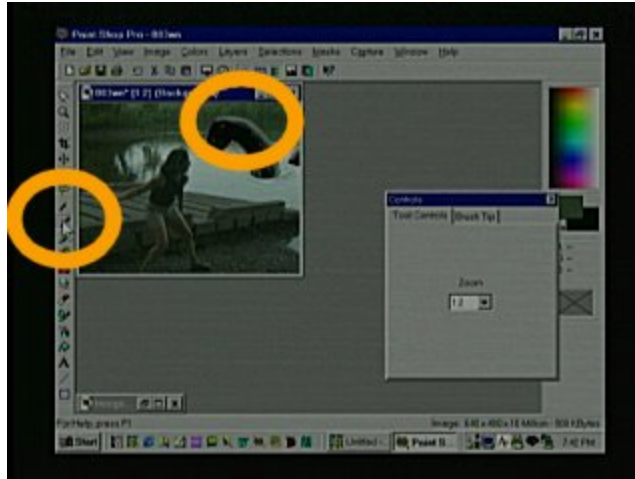
After I have cleaned up the sea monster I change the Size of the airbrush to 4 and the Opacity to 9.



Click on the Dropper tool again and then left click with the Dropper on the darker green part of the water. You will use the darker green to add ripples to the water.



Click on the AirBrush tool again and then make partial circles around the neck and body of the animal.



To add the foggy mist click on the Dropper tool again and choose the same light gray we used for the monsters back. You can just left click on his back or the same place on the cement you originally found the gray.



Select the AirBrush tool again and set the Opacity to 4 and the Size to 17.

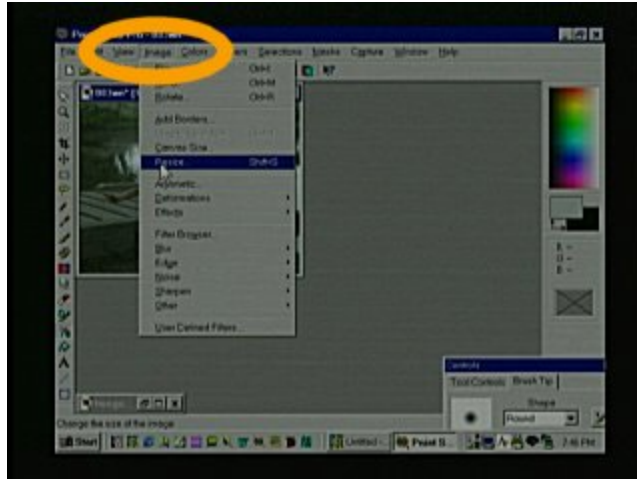




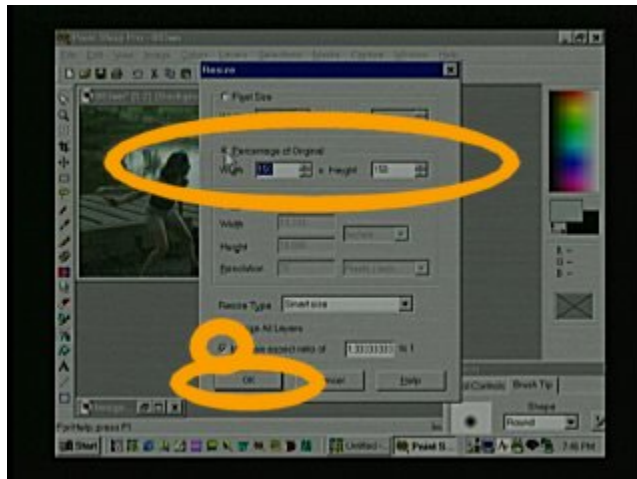
Make quick horizontal movements spraying fog on the water and in the trees. Do not spray on the closest objects toward the bottom of the image. It is very hard to see mist that is very close to your face.



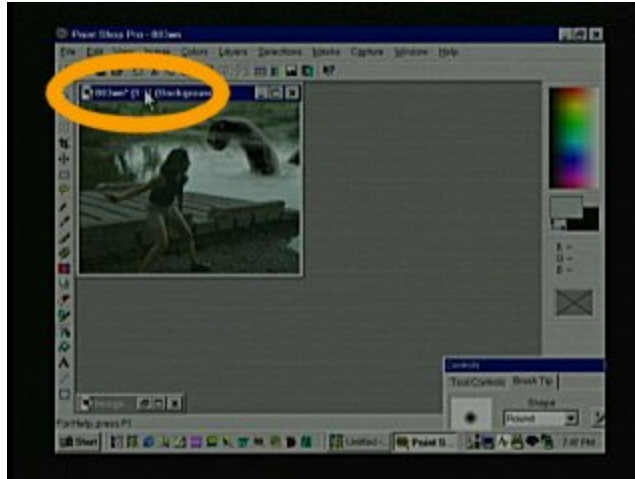
Look at that you did it again. Now all you have to do is shrink the image so people won't see any little mistakes and save the image.



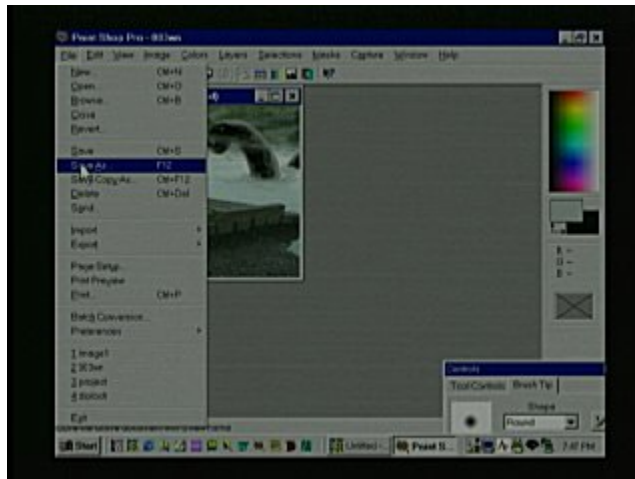
To shrink the image, click the Image menu and scroll down to Resize.



You will get this box. Here you can click on the Percent of Original section and type 50. Then click the Maintain Aspect Ratio section and then the OK button.



Then press the (+) key on your keyboard so the numbers on the top of the image are 1:1. That means it is at its full size.



Finally click File on the menu and scroll down to the Save As selection.



Choose into which directory you wish to save your image, the file type and the name for the image and click the Save button. Here is what the image looks like as part of a Word document that could be printed.



Now go edit your own image and help me fix the universe.